

TECHNICAL FILE:

French socket



1.- Technical specifications

Rated voltage: 230 V ~

Rated current: 16 A

Manufactured according CEI 60.884-1 standard

Flush mounting in universal box according EN-60-670 standard

Screw terminals (accepts from 1 mm² to 2 X 2.5 mm² cross section cable)

Any plate combination can be produced combining switches, sockets, dimmers,...

Any plate size according to your requirements.

2.- Material characteristics

Body: Polycarbonate

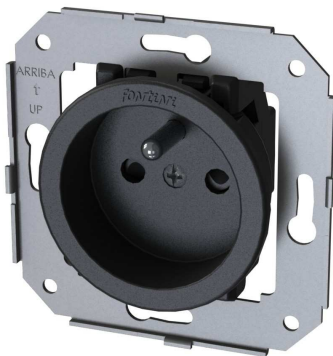
Glow wire test: 850 °C

Terminals: Brass CuZn33

Screws: Steel CQ15. Slotted Phillips pan head. Metric thread M3.5

Shutters (child protection) included

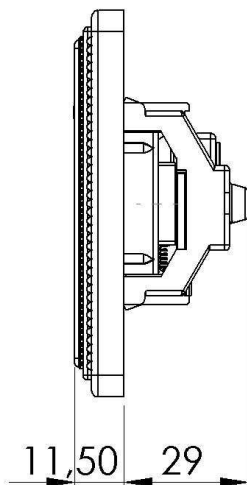
Frame: Cast brass (Anthracite, satin nickel, graphite, golden and antique bronze finish)



3.- Certificate approvals

CE certificate

Height dimensions (size in mm)



Frame dimensions (size in mm)

